

## 2 Bed Property For Residential in Alicante

€269,000

### Benitachell

Ref: ON-64392

- Vistas Al mar
- Armarios
- Puerta Blindada
- Urbanización
- Electrodomesticos
- 1ª Línea de Playa
- Terraza
- Vistas Despejadas
- 2 bedrooms

Telephone: +351 213 471 603

Email: [info@portugalhomes.com](mailto:info@portugalhomes.com)

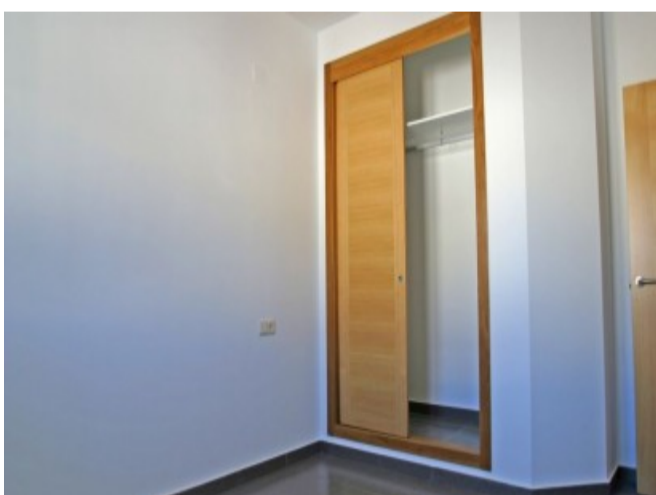
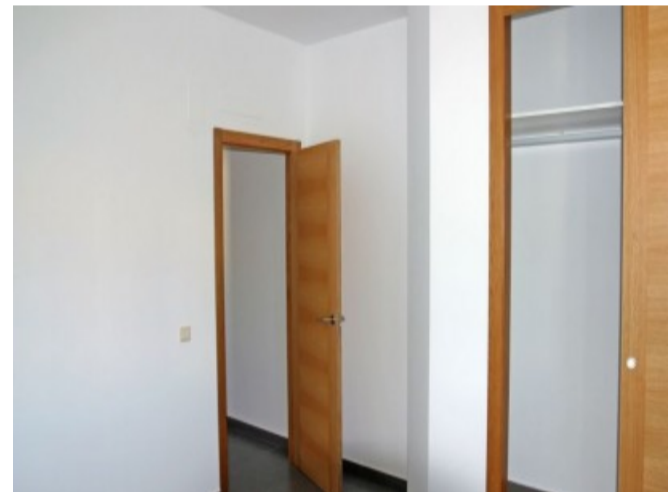
Avenida da Liberdade 67B, 5th Floor, 1250-140 Lisboa, Portugal Licence AMI - 14414 | APEMIP 5940





## Property Description

KEY READY villa built on a plot of 819m<sup>2</sup> with sea view from the porch. The villa has 2 bedrooms with fitted wardrobes and mosquito nets in windows, 1 bathroom, living-dining room with cassette fireplace, kitchen equipped with furniture and appliances, installation of solar panels for the production of domestic hot water using thermal solar energy, alarm system, etc. A brand new villa with sea views. Include in the villa: Private plot and fenced, Garden, Swimming pool, Parking, Decoration project with technical lighting, Heating by underfloor heating, Preinstallation Ducted air conditioning, Kitchen equipped with appliances: Integrated combined refrigerator, Independent multi-function oven with timer, Independent Touchcontrol hob, Decorative hood, Microwave for free installation Homes that enjoy all the services that a consolidated urbanization such as the Cumbre del Sol offers, with a shopping area with supermarket, hairdresser, pharmacy, bars and restaurants, Lady Elizabeth Junior School and a diverse range of sports with tennis and paddle courts, hiking trails, horse riding centre, beach and bays with beach bars.



Telephone: +351 213 471 603

Email: [info@portugalhomes.com](mailto:info@portugalhomes.com)

Avenida da Liberdade 67B, 5th Floor, 1250-140 Lisboa, Portugal Licence AMI - 14414 | APEMIP 5940



## Additional Details

### Attributes

<b>Status</b> Available	<b>Land Area</b> 90m2
----------------------------	--------------------------

### Property Features

Vistas Al mar	Urbanización	Terraza
Armarios	Electrodomesticos	Vistas Despejadas
Puerta Blindada	1ª Línea de Playa	2 bedrooms